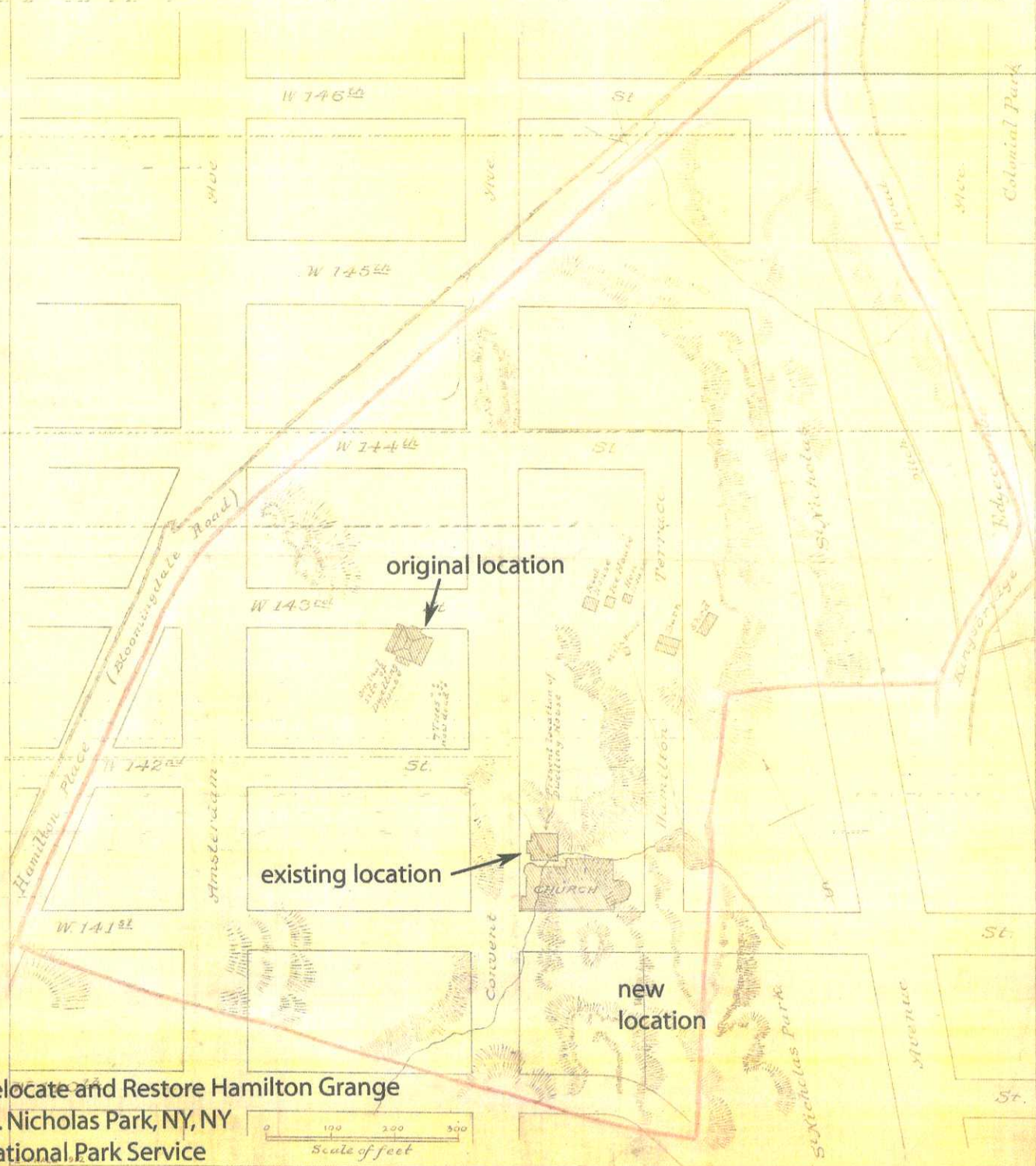
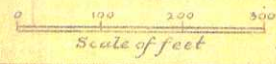


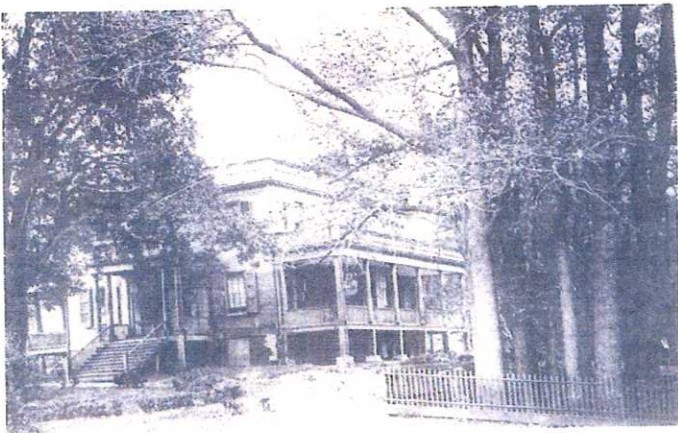
HAMILTON GRANGE
FILED BY NYLS/STP

Hamiltons' 1819 boundry with 1911 survey overlay



Relocate and Restore Hamilton Grange
 St. Nicholas Park, NY, NY
 National Park Service





Grange SE Elevation ca. 1884, Sweet Gums to the east.



Grange, existing Front Elevation



Narrow alley @ Grange St Lukes' to the South



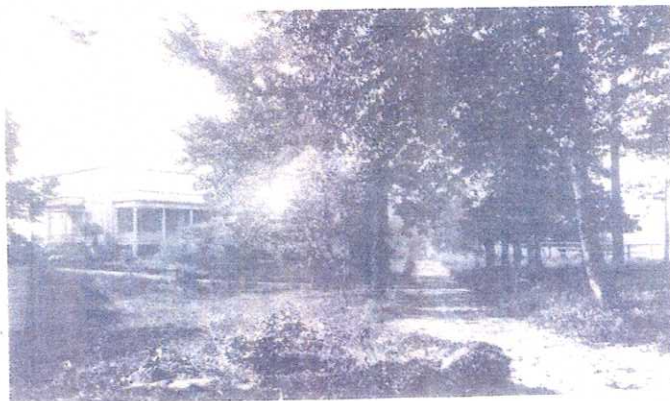
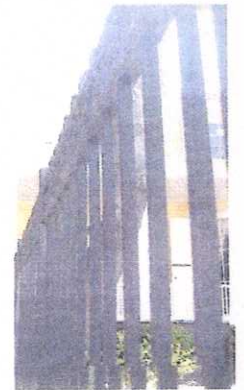
Grange NE Elevation ca. 1876



New Site viewed from Hamilton Terrace



Grange abutting pt Bldg to the North



Grange NW Elevation ca. 1876



Grange, existing rear elevation viewed from Hamilton terrace



Grange, existing rear elevation



Relocation and Restoration of Hamilton Grange
St. Nicholas Park, NY, NY
National Park Service

RELOCATION, STABILIZATION & RESTORATION OF HAMILTON GRANGE

287 CONVENT AVENUE - ST. NICHOLAS PARK, NEW YORK, NY 10031

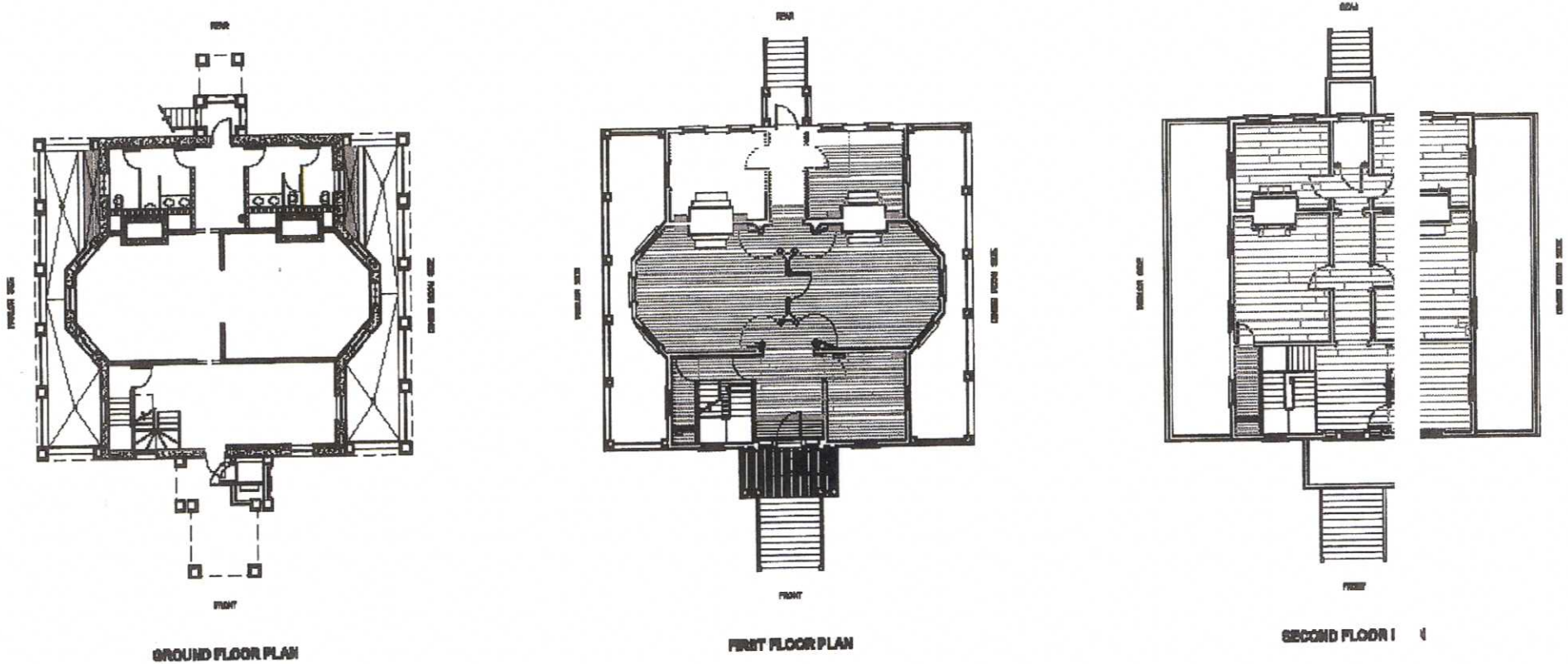


Figure 1



NATIONAL PARK SERVICE

BIGMORE, OWINGS & MERRILL, LLP
JOHN G. WAITE ASSOCIATES, ARCHITECTS, PLLC

Floor Plans for the Restored Grange



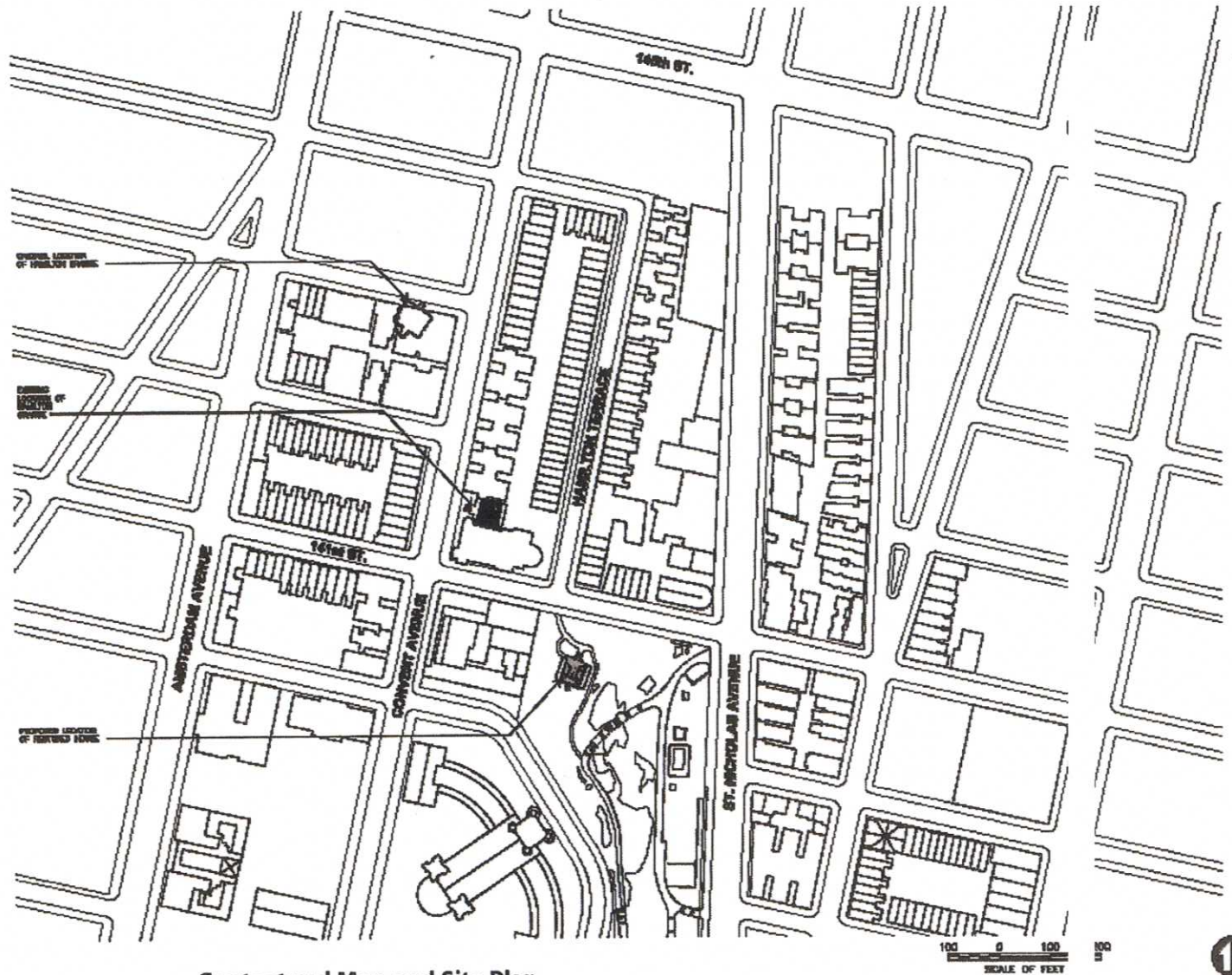
FALL 2008

RELOCATION, STABILIZATION & RESTORATION OF HAMILTON GRANGE

237 CONVENT AVENUE - ST. NICHOLAS PARK, NEW YORK, NY 10021



HISTORIC PHOTOS - HAMILTON GRANGE ON ORIGINAL SITE



NATIONAL PARK SERVICE

SKIDMORE, OWINGS & MERRILL, LLP
JOHN G. WAITE ASSOCIATES, ARCHITECTS, PLLC

Contextual Map and Site Plan

Original, Existing and New Location



FALL 2008



Proposed Landscape at New Site

Reloca
St. Nicholas Park, NY, NY
National Park Service

40
SCALE OF FEET

